

PRIME STORE FOR LEASE IN THE HEART OF BROOKLYN HEIGHTS BROOKLYN, NEW YORK, 11201

Location

130 CLINTON STREET

(Between Joralemon St. & Livingston St.)
Brooklyn, NY 11201

Description

Modern ground floor space ideally suited for any dry retail or professional use in the heart of one of New York's most desirable neighborhoods.

The space is situated at the base of an eighty-eight unit / 93,500 square foot Co Op building in the heart of one of the most demographically-desirable neighborhoods in the country. The space is just a block away from several major subway lines.

Space

+/- 1,200 rsf

Features

- * Clean Space
- * Modern Storefront
- * Central HVAC
- * High Ceilings (11')
- * Hardwood Floors
- * Fully Alarmed
- * Excellent Foot Traffic
- * Strong Vehicular Traffic

Possession

Available for Immediate Possession



Demographics

	.25 Miles	.50 Miles	.75 Miles
Total Population	11,201	35,012	96,866
Number of Households	6,095	17,648	42,857
Avg Household Income	\$137,209	\$124,753	\$100,358
Median Household Income	\$90,657	\$82,429	\$65,319

Term

Long-Term Lease Available

Rent

Offered at \$6900 per Month NNN



Member of
International
Council of
Shopping Centers

Tony vanderBeek

718.887.6200

Coldwell Banker Mid Plaza Commercial Real Estate

RETAIL & OFFICE LEASING and INVESTMENT PROPERTY SALES

tony@tvbrealty.com

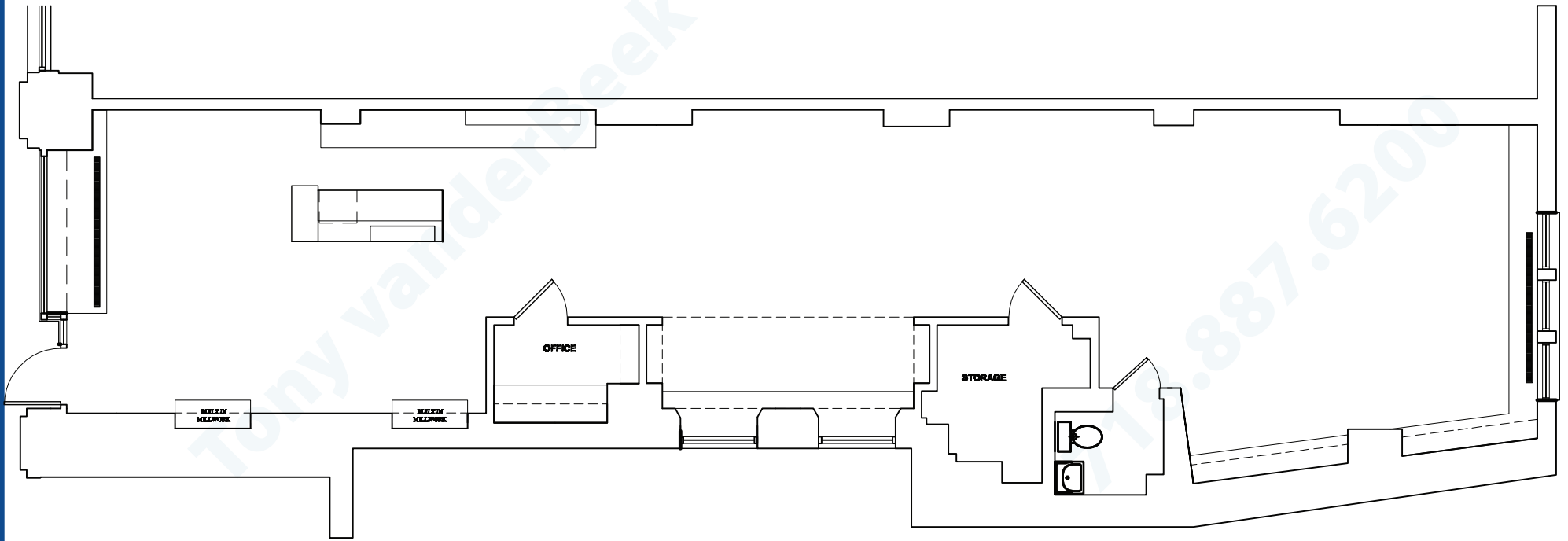
www.TvBRealty.com

**COLDWELL
BANKER**









All of the information furnished has been provided to us by sources which we deem to be reliable. However, no warranty or representation is made as to the accuracy thereof.

This information is submitted subject to error, omissions, change of price or rental, change of other terms and conditions, suitable references, prior sale, lease or financing, or withdrawal without notice.

Floor Plan

Coldwell Banker Mid Plaza Commercial Real Estate

**COLDWELL
BANKER** 

**130 Clinton Street
Brooklyn, NY 11201**

Tony vanderBeek
718.887.6200
tony@tvbrealty.com

Copyright Tony vanderBeek