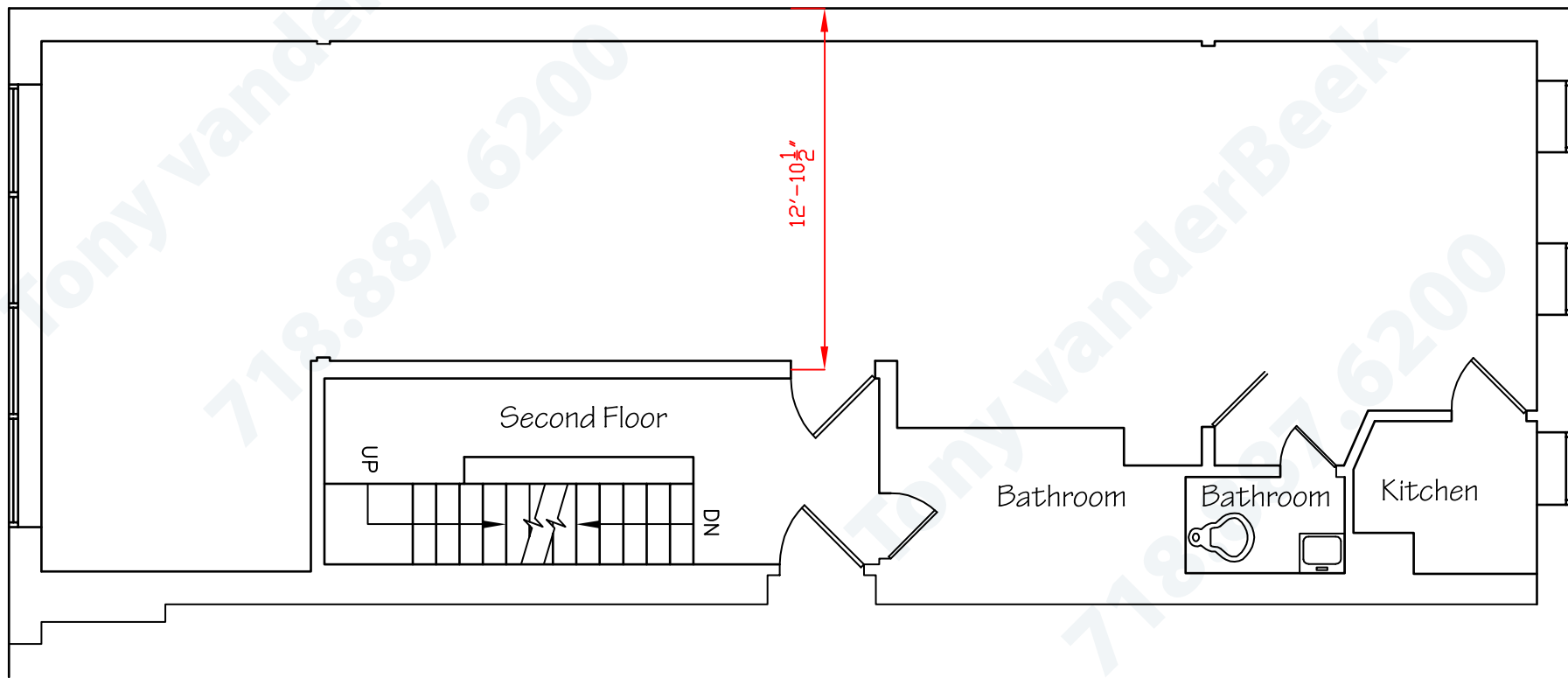


Flatbush Avenue

55'-10"

12'-10 $\frac{1}{2}$ "



Coldwell Banker Mid Plaza Commercial Real Estate



**1569 Flatbush Avenue, Second Floor**  
**Brooklyn, NY 11210**

**Tony vanderBeek**  
**718.887.6200**  
**tony@tvbrealty.com**

Copyright Tony vanderBeek